



N i D i



Lives in Contexts

POPULATIONS CHANGE BECAUSE PEOPLE CHANGE



Netherlands Interdisciplinary Demographic Institute
an institute of the Royal Netherlands Academy of Arts and Sciences (KNAW)

Lives in Contexts

POPULATIONS CHANGE BECAUSE PEOPLE CHANGE

www.nidi.nl



“As a field with its own body of interrelated concepts, techniques, journals, and professional associations, demography is clearly a discipline. But by the nature of its subject matter and methods demography is just as clearly an ‘interdiscipline’ drawing heavily on biology and sociology for the study of fertility; on economics and geography for studies of migration; and on the health sciences for analysis of mortality.”

J. Mayone Stycos (1989)

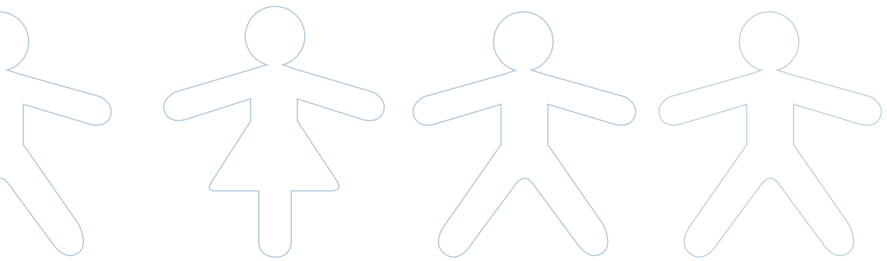
NIDI is the national demographic institute of the Netherlands. Founded in 1970, NIDI became affiliated to the Royal Netherlands Academy of Arts and Sciences (KNAW) in 2003 and is the only social science institute of the Academy. Firmly rooted in science and society NIDI draws its inspiration from the interplay of demographic and social issues and strives for scientific excellence.

OUR MISSION is to build and maintain a knowledge infrastructure for population issues to address the challenges that demographic developments pose to individuals and society. Population growth and decline, mobility and population distribution, population ageing and population diversity, life course dynamics, intergenerational relations, and health and longevity are but a few of the dimensions of the ever-changing landscape of population issues which make up the *population challenge*. Demographic research is needed to address this challenge and to study population trends and their impacts on economic development, the environment, social networks, social cohesion, health and care systems, retirement and social security issues, family life and wellbeing.

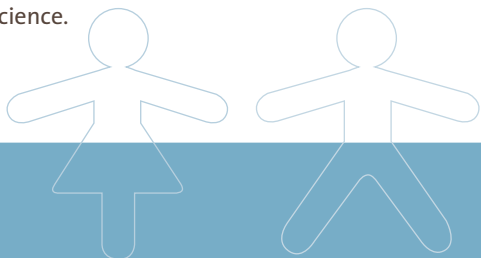
OUR AIM is to create and share demographic knowledge. Our goal is to conduct high-quality scientific research into population issues (our core activity) and to disseminate demographic knowledge to stakeholders in academia, policy and society at large.

OUR RESEARCH

- is driven by societal issues, scientific curiosity and a demand for knowledge
- is interdisciplinary and international
- integrates basic and applied studies
- stresses the micro-foundations of population change
- has a clear focus that captures the ultimate cause of population change: ‘Lives in Contexts’



OUR STAFF of about 50 people includes researchers, postdocs, PhD candidates and visiting research fellows; we also host Master trainees and staff seconded by other organizations. Staff covers a wide range of disciplines such as demography, economics, sociology, geography, epidemiology, gerontology, mathematics, statistics and computer science.



ORGANIZATION

NIDI is led by Director Frans J. Willekens who is supported by Deputy Director Nico van Nimwegen.

The Director is fully mandated by the Academy to manage the institute.

A Management Team consists of the Director and Deputy Director and the Heads of Department Joop de Beer, Kène Henkens and Aart Liefbroer.

A Support Department is responsible for all services in support of the core research activities. It comprises units responsible for financial, administrative and secretarial support, research support, ICT, library, documentation and information facilities.

SCIENTIFIC ADVISORY BOARD

This Board is currently chaired by Guillaume Wunsch (University of Louvain-la Neuve, Belgium), and further consists of Han Entzinger (Erasmus University Rotterdam), Nico Keilman (University of Oslo/Statistics Norway), Clara Mulder (University of Amsterdam), Joop Schippers (University of Utrecht), Jan Vandenbroucke (University of Leiden) and James Vaupel (Max-Planck-Institute for Demographic Research, Rostock, Germany).

SCIENTIFIC NETWORKS

NIDI is an active partner in population studies in the Netherlands, Europe and the world.

NIDI is host to the secretariats of the Netherlands Demographic Society (NVD) and the European Association for Population Studies (EAPS).



LIVES IN CONTEXTS

Populations change because people change. Demographic trends at the macro level are the result of behaviour at the micro level. To explain why populations change we need to understand why individuals change and thus how “contexts” affect lives. Relevant contexts include the family or household, the generation, and the many institutions in the broader social, cultural and economic settings. ‘Lives in contexts’ is our overarching research theme.

This central theme is taken up in seven interrelated research strands which are the backbone of our two research departments: the Social Demography Department and the Projections, Migration and Health Department. Research projects are carried out by teams that may involve researchers from both departments.

THE SOCIAL DEMOGRAPHY DEPARTMENT

The focus is on major transitions in life, like the transition to adulthood and the transition to retirement, and on “linked lives”; a policies research strand feeds on both departments.



EARLY STAGES OF THE LIFE COURSE

Young adulthood is a crucial life phase where women and men take decisions in several life domains that have far-reaching consequences for their future life courses. NIDI research on the life courses of young adults takes both the micro- and the macro-context of demographic decisions into account and focuses on the processes of leaving home, union formation, parenthood and divorce.

PROJECTS INCLUDE:

- > reproductive decision-making in a macro-micro perspective (REPRO)
- > life-course trajectories and well-being among young adults
- > demography of young adults and intergenerational transfers
- > nuptiality in The Netherlands

LATER STAGES OF THE LIFE COURSE

The Third Age is a dynamic period in the life course where older adults experience transitions in life domains such as work and family. NIDI research focuses on the causes and consequences of the transition from work to retirement and is set against the backdrop of an ageing population and workforce, and policies to raise the labour force participation of the elderly. NIDI research explicitly takes the social context of the labour market behaviour of older adults into account.

PROJECTS INCLUDE:

- > the process of retirement: a dynamic and multi-actor perspective (VIDI)
- > activating senior potential in ageing Europe (ASPA)

INTERGENERATIONAL RELATIONS

The study of intergenerational relations and solidarity focuses on changes in the structure and functioning of family networks and the influence of families on demographic behaviour. Panel data allow the study of how and to what extent intergenerational relations and solidarity manifest themselves and change within families and over time. Another key question is how individual experiences and events which take place during the life course affect well-being in later life.

PROJECTS INCLUDE:

- > Netherlands Kinship Panel Study (NKPS)
- > Generations and Gender Programme (GGP)
- > how demographic changes shape intergenerational solidarity, well-being and social integration: a multilinks framework (MULTILINKS)
- > major ageing and gender issues in Europe (MAGGIE)

POLICY CONTEXTS

The social context in which the life course develops is partly shaped by policy interventions. This necessitates to study the interplay of demographic trends and demographic behaviour and policy. This strand emphasizes the need for evidence-based policy making and analyzes policy implications of current and future demographic trends; also attitudes about population issues and their policy implications are studied.

PROJECTS INCLUDE:

- > population issues in The Netherlands (WPRB)
- > Demography Network EU Social Situation Observatory (DemoNet)

THE PROJECTIONS, MIGRATION AND HEALTH DEPARTMENT

The focus is on future demographic trends and impacts, migration and integration, and health.



POPULATION PROJECTIONS AND MODELS

Multi state models are developed which describe the size and composition of a population in terms of the transitions people make in life. These models are used for forecasting cohorts and populations that consist of overlapping generations.

PROJECTS INCLUDE:

- bridging the micro-macro gap in population forecasting (MicMac)

MIGRATION AND INTEGRATION

Methods are developed to improve the quality and comparability of migration information in Europe, including the estimation of missing data in order to generate better understanding of international migration in Europe. Research on the integration of immigrants focuses on the demographic and socio-economic situation of the second generation in different European countries with different institutional settings.

PROJECTS INCLUDE:

- modelling migration and migrant populations (MIMOSA)
- estimation of international migration flows in Europe
- the integration of the European Second Generation (TIES)

HEALTH

The focus is on population health and health systems. Population health depends on lifestyle and life course. One aspect of health systems is health financing, including resource flows for sexual and reproductive health.

PROJECTS INCLUDE:

- financial resource flows for population and AIDS activities (RF)
- the interface between demography, epidemiology and actuarial sciences (DEA)
- forecasting population health and long-term care (ANCIEN)

INFORMATION AND PUBLICATION

The NIDI website www.nidi.nl is targeted at scholars, policy-makers, students and the general public, including the media. In addition to providing general information about NIDI, the website posts full-text publications (DEMOS, NIDI Reports, Working Papers) in PDF format and, serving as a portal, provides web links to national and international demographic organisations and sources of information.

PUBLICATION PROGRAMME:

- DEMOS, Bulletin on Population and Society. DEMOS has ten issues a year and a circulation of over 3,500; it is aimed at a broad, general audience in political, policy and education circles. DEMOS is also available online. The bulletin occasionally appears in English
- NIDI Reports primarily disseminate research findings and are published under the KNAW Press imprint by Aksant Publishers. NIDI Reports are also available on the NIDI website
- NIDI research outcomes are published in national and international scholarly journals and books

PRACTICAL INFORMATION

Mailing address	Visiting address	telephone: +31(0)70 356 5200
P.O.Box 11650	Lange Houtstraat 19	fax: +31(0)70 364 7187
2502 AR The Hague	2511 CV The Hague	e-mail: info@nidi.nl
The Netherlands	The Netherlands	website: www.nidi.nl

Bank: ABN-AMRO 45.83.68.687 in the name of NIDI-KNAW, The Hague
BICcode: ABNANL2A, IBAN: NL56ABNA0458368687



N i D i

